

# ISUZU

# ELF



## SAFETY PLUS

**SRS**  
AIRBAG

**ASR**  
ANTI-SLIP REGULATOR

**ABS**  
ANTI-LOCK BRAKING SYSTEM

**EBD**  
ELECTRONIC BRAKE FORCE DISTRIBUTION

 **IMMOBILIZER**

\*AVAILABLE ON NMR 125 MODEL\*

4 WHEELER

GVW 4,800kg

GVW 5,100kg

**NLR**  
**PRO**

**NMR**  
**125**

**5**

YEARS WARRANTY  
OR  
300,000 km  
WHICHEVER  
COMES FIRST

**EURO 4**



**FREE**  
SERVICE CAMPAIGN  
 **ISUZU**

Product image for illustration purposes only. Actual product may vary.

# SPECIFICATIONS

## NLR PRO

## NMR 125

MODEL CODE	NLR77UEE	NLR77UHE	NMR85UEH	NMR85UHH	
<b>Drive Train</b>	4 x 2				
<b>ENGINE</b>					
Model	4JH1-TC		4JJ1-TCC		
Type	4-Cylinder In-line, 4 Cycle, Water-Cooled				
	OHV, Turbo with Intercooler		DOHC, V6S Turbo with Intercooler		
Displacement	cc				
Maximum Output (Gross)	77 (105) @ 3,200		91 (125) @ 2,600		
Maximum Torque	230 @ 1,400-3,400		354 @ 1,500		
Emission Level	Euro 4				
Fuel System	Commonrail Direct Injection				
<b>TRANSMISSION</b>					
Model / No. of Speed	MSB-5S		MYY-5M		
Gear Ratio	Manual 5-Speed				
	1st	5.016		5.315	
	2nd	2.672		2.908	
	3rd	1.585		1.655	
	4th	1.000		1.000	
	5th	0.770		0.721	
	Reverse	4.783		5.068	
	Final	5.857		4.556	
<b>WEIGHT &amp; CAPACITIES</b>					
Gross Vehicle Weight	kg	4,800		5,100	
Curb Weight	kg	1,920	1,970	2,015	2,065
Front	kg	1,385	1,395	1,465	1,475
Rear	kg	535	575	550	590
Fuel Tank Capacity	l	75	100	75	100
<b>AXLE</b>					
Front	Type	Reverse Elliot, I-Beam			
Front Axle Capacity (Design)	kg	2,900			
Rear	Type	Banjo, Full Floating			
Rear Axle Capacity (Design)	kg	3,600			
<b>SUSPENSION SYSTEM</b>					
Suspension	Front	Semi Elliptical Alloy Steel Leaf Spring with Double Acting Telescopic Shock Absorber, Stabiliser Bar			
	Rear	Semi Elliptical Alloy Steel Leaf Spring with Double Acting Telescopic Shock Absorber			
<b>TYRES &amp; WHEELS</b>					
Tyres	205/85R16		205/75R17.5		
Wheels	16 x 5.5J-85		17.5 x 5.25-115		
<b>BRAKES</b>					
Service	Type	Hydraulic System with Auto Adjusting Front and Rear Drum Brakes			
		Dual Circuit, Vacuum Assistance and Anti-Lock Brake System (ABS) with Electronic Brake Force Distribution (EBD)			
Parking Brake Type		Transmission Mounted, Mechanical Operated Internal Expanding			
Auxiliary		Exhaust Brake			
<b>STEERING</b>					
Steering System		Power Assist, Recirculating Ball Type			
Min. Turning Radius	m	5.1	7.3	5.6	7.3
<b>ELECTRICAL</b>					
Battery	95D31L x 1		80D26L x 2		
Alternator	12V-60A		24V-90A		
<b>OTHER SAFETY</b>					
<b>Safety</b>	Supplemental Restraint System (SRS) with Pre-Tensioner Seatbelt				
	Anti-Slip Regulator (ASR) with On/Off Function				
	Cab Tilt Warning				
<b>Security</b>	Central Locking with Remote Keyless Entry		Central Locking with Remote Keyless Entry & Immobiliser		
<b>DIMENSION</b>					
Overall Length	mm	4,730	6,025	4,730	6,025
Overall Width	mm		1,815		
Overall Height	mm	2,172	2,175	2,172	2,175
Wheelbase	mm	2,475	3,345	2,475	3,345
Front Overhang	mm		1,110		
Rear Overhang	mm	1,145	1,570	1,145	1,570
Front Tread	mm		1,475		
Rear Tread	mm			1,445	
Cab to Axle Center	mm	2,022	2,892	2,022	2,892

# TESTED AND PROVEN POWERTRAIN



### NLR PRO

4JH1-TC

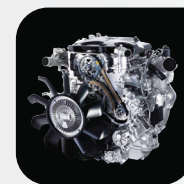
Displacement: 2,999cc

Max. Output (Gross): 77kW (105ps) @ 3,200rpm

Max. Torque: 230Nm @ 1,400 - 3,400rpm

**105PS**  
Max Power

**230Nm**  
Flat Torque



### NMR 125

4JJ1-TCC

Displacement: 2,999cc

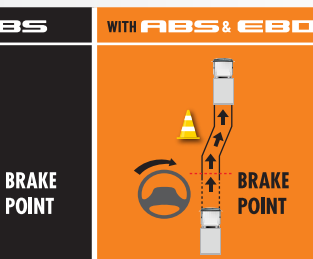
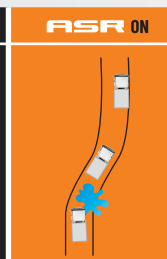
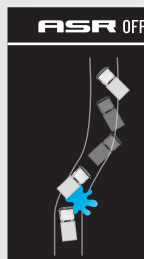
Max. Output (Gross): 91kW (125ps) @ 2,600rpm

Max. Torque: 354Nm @ 1,500rpm

**125PS**  
Max Power

**354Nm**  
Flat Torque

# CLASS-LEADING SAFETY AND LONG TERM COST SAVINGS



ASR traction control helps prevent wheelspins and improves vehicle stability when driving on slippery roads.

EBD is a function that uses the ABS to distribute braking force between the front and rear wheels to compensate for changes in the load conditions or any shift of load due to acceleration/deceleration, thus preventing premature locking of the rear wheels.

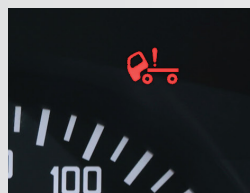


\*SRS airbag system and seat belt with pretensioner are activated in the event of a frontal collision, mitigating impact to the head and chest.



Brand New Feature - USB Port

\*Applicable for driver only.



Cabin Tilt Warning & Buzzer for driver safety warning



LED Headlight to provide better visibility



Gross Vehicle Weight (GVW) from 4.8T increased to 5.1T \*For NMR 125 Only

Dealer's information



ISUZU MALAYSIA SDN BHD 200401026438 (664946-H)

501D, LEVEL 5, TOWER D, UPTOWN 5, NO.5, JALAN SS21/39,  
DAMANSARA UPTOWN, 47400 PETALING JAYA, SELANGOR DARUL EHSAN.  
GENERAL LINE: 03-7723 9777 FAX: 03-7723 9779  
HOTLINE: 1-300-88-1133 www.isuzu.net.my

[f](#) IsuzuTrucksMalaysia [y](#) IsuzuTrucksMalaysia [globe](#) www.isuzu.net.my

ISUZU SERVICE CENTRE SDN BHD 201601034731 (1205672-X)

LOT 730, JALAN SG. RASAU, SECTION 16,  
40200 SHAH ALAM, SELANGOR DARUL EHSAN.  
PHONE: 03-5513 0518  
FAX: 03-5512 7550

**ISUZU**  
GENUINE PARTS

**ISUZU**  
BEST VALUE PARTS